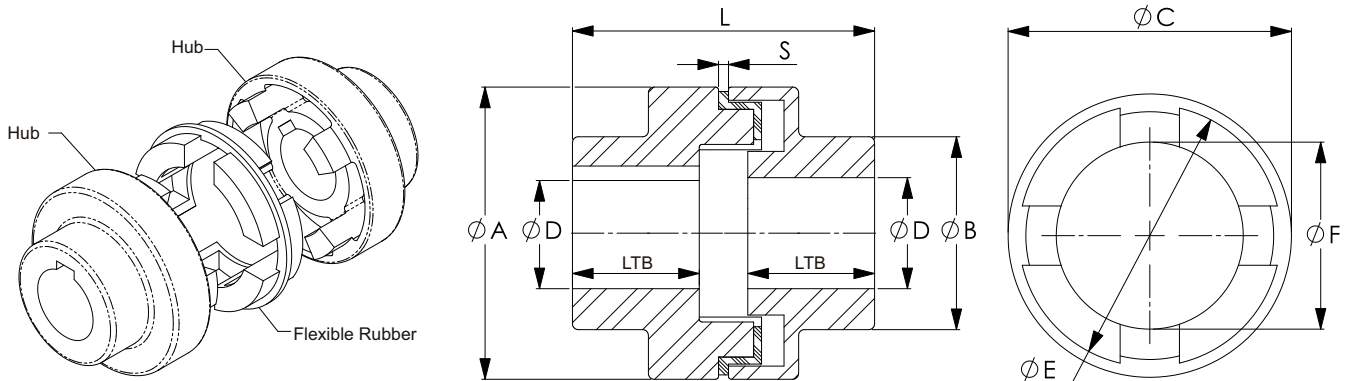




NM coupling consists of two hubs and flexible ring able to compensate all types of shaft misalignments. The flexible rings are made of Nitile rubber (NBR) which have a high internal damping characteristic which enable to absorb and dampen torsional vibrations, operate effectively in temperature range of -40 °C to +100 °C. The NBR material also resists to oil, dirt, grease, moisture, ozone and many chemical solvents.



### Ratings and Dimensions

NM Size	Rated Torque		Max. Speed (RPM.)	Bore, D		Dimension (mm.)								Total Weight (kg.)	
	Normal (Nm.)	Max. (Nm.)		Min. (mm.)	Max. (mm.)	A	B	LTB	L	S	C	E	F		Number Of jaws
50	13	27	13,500	7	19	50	33	25	52.0	2.0 ± 0.5	49	44.5	31.5	4	0.48
67	22	45	10,000	9	28	67	46	30	62.5	2.5 ± 0.5	66	59.0	41.5	4	1.02
82	48	100	8,000	10	32	82	53	40	83.0	3.0 ± 1.0	81	73.5	50.5	4	1.88
97	96	200	7,000	12	42	97	69	50	103.0	3.0 ± 1.0	96	91.0	65.0	5	3.54
112	150	310	6,000	14	48	112	79	60	123.5	3.5 ± 1.0	111	104.0	75.5	6	5.40
128	250	500	5,000	18	55	128	90	70	143.5	3.5 ± 1.0	127	116.5	85.0	6	8.10
148	390	800	4,500	22	65	148	107	80	163.5	3.5 ± 1.0	147	135.0	105.5	7	13.50
168	630	1,300	4,000	28	75	168	124	90	183.5	3.5 ± 1.5	167	154.0	121.0	8	19.30

Remarks: 1. Splined, hex, round, set screw or keyway bore available at additional charge.  
2. Coupling hub material is made of cast iron.

## B.V. Transmission Industries

Unit 18 , Khyati Industrial Estate,  
Laxmi Nagar, Link Road , Goregaon West,  
Mumbai - 400104, Maharashtra , India

Tel : +91- 22-28762345  
Tel : +91- 22-28767941  
☎ : +91- 93247 18035  
☎ : +91- 98206 92004

email :: sales@bvchains.com  
bvchain@gmail.com  
web:: www.bvchains.com