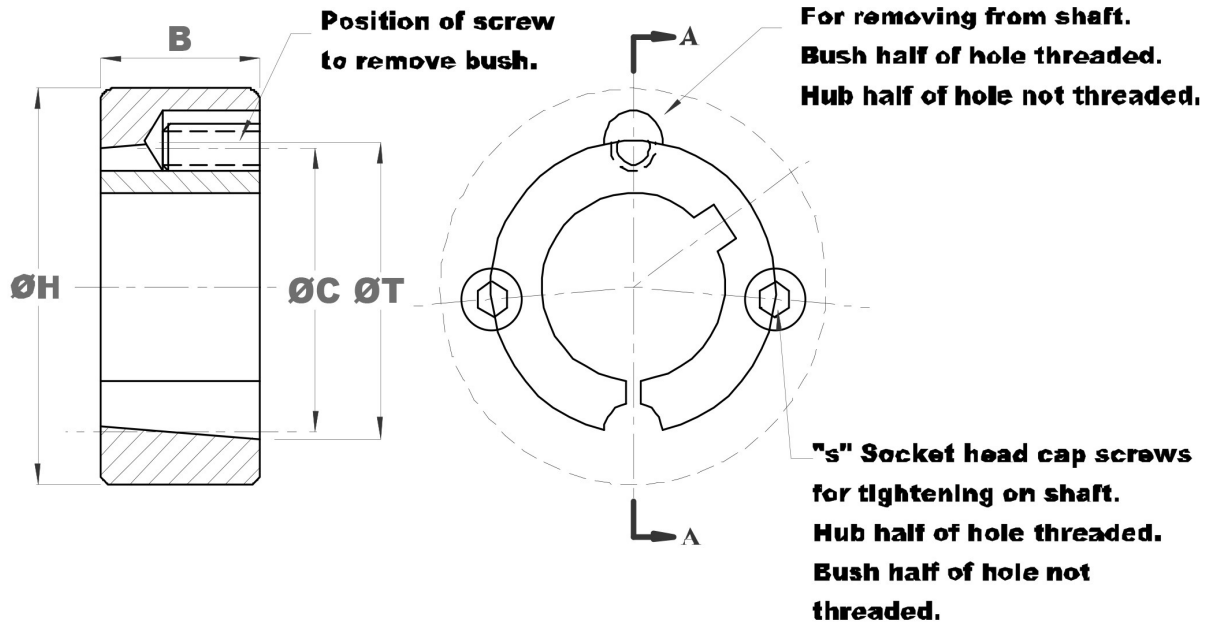


TAPERLOCK BUSH DIMENSIONS

1008 – 3030

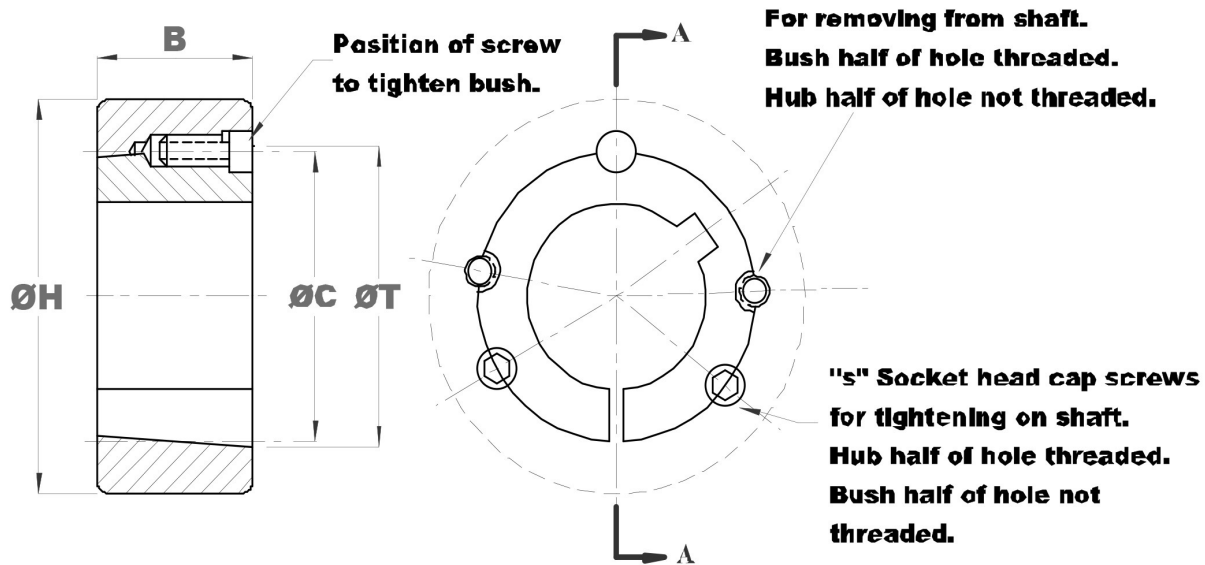


| BUSH SIZE | T mm | B mm | H mm (minimum hub diameter) | C mm | SET SCREW (BSW) |
|-----------|-------|------|--------------------------------|-------|-----------------|
| 1008 | 35.2 | 22.2 | 60.3 | 33.7 | 1/4 X 1/2 |
| 1108 | 38.4 | 22.2 | 63.5 | 36.9 | 1/4 X 1/2 |
| 1210 | 47.6 | 25.4 | 92.1 | 44.5 | 3/8 X 5/8 |
| 1215 | 47.6 | 38.1 | 79.4 | 44.5 | 3/8 X 5/8 |
| 1310 | 50.8 | 25.4 | 95.3 | 47.6 | 3/8 X 5/8 |
| 1610 | 57.2 | 25.4 | 101.6 | 54.0 | 3/8 X 5/8 |
| 1615 | 57.2 | 38.1 | 88.9 | 54.0 | 3/8 X 5/8 |
| 2012 | 69.9 | 31.8 | 120.7 | 66.7 | 7/16 X 7/8 |
| 2517 | 85.7 | 44.5 | 139.7 | 82.6 | 1/2 X 1 |
| 2525 | 85.7 | 63.5 | 120.7 | 82.6 | 3/8 X 1 |
| 3020 | 108.0 | 50.8 | 177.8 | 101.6 | 5/8 X 1.1/4 |
| 3030 | 108.0 | 76.2 | 158.8 | 101.6 | 7/8 X 1.1/4 |

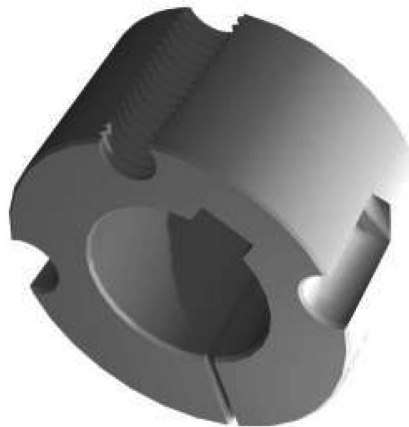


TAPERLOCK BUSH DIMENSIONS

3525 - 5050



| BUSH SIZE | T mm | B mm | H mm (minimum hub diameter) | C mm | SET SCREW (BSW) |
|-----------|-------|-------|--------------------------------|-------|-----------------|
| 3525 | 127.0 | 63.5 | 197.0 | 123.0 | 1/2 X 1.1/2 |
| 3535 | 127.0 | 89.0 | 197.0 | 123.0 | 1/2 X 1.1/2 |
| 4030 | 146.0 | 76.2 | 241.0 | 141.0 | 5/8 X 1.3/8 |
| 4040 | 146.0 | 102.0 | 241.0 | 141.0 | 5/8 X 1.3/8 |
| 4535 | 161.0 | 89.0 | 267.0 | 156.0 | 3/4 X 2 |
| 4545 | 161.0 | 114.0 | 267.0 | 156.0 | 3/4 X 2 |
| 5040 | 178.0 | 101.6 | 292.0 | 171.0 | 7/8 X 2.1/4 |
| 5050 | 178.0 | 127.0 | 292.0 | 171.0 | 7/8 X 2.1/4 |



TAPER BUSH INSTALLATION INSTRUCTIONS

TO ASSEMBLE:

1. Clean and degrease the bore and surfaces of the bush and tapered bore of the hub. Insert the bush into the hub and line up the holes (half thread holes must line up with half unloading holes).
2. Lightly oil the grub screws and screw in but do not tighten yet.
3. Clean and degrease the shaft. Fit the hub with taper bush on the shaft and place in desired position.
4. When using a key, it should be first fitted in the shaft keyway. There should be a top clearance between the key and keyway bore.
5. Gradually tighten the screws in accordance with the torques in the table.
6. When the drive has been operating under load for a short period of time, check and ensure that the screws remained at the appropriate tightening torque.

TO REMOVE:

1. Loosen and remove all screws and place them in the holes of the bushing.
2. Tighten the screws alternatively till the hub's grip on the bush is loosened. The inner bore of the bushing can be slid on the shaft.
3. Remove the bush from the shaft.

| TAPERLOCK BUSH | SCREW TIGHTENING TORQUES (Nm) | SCREW QUANTITY | SCREW SIZE |
|---------------------------|--|---------------------------|-----------------------|
| 1008 1108 | 5.6 | 2 | 1/4 BSW |
| 1210 1215 | 20 | 2 | 3/8 BSW |
| 1310 1315 | 20 | 2 | 3/8 BSW |
| 1610 1615 | 20 | 2 | 3/8 BSW |
| 2012 | 31 | 2 | 7/16 BSW |
| 2517 | 48 | 2 | 1/2 BSW |
| 3020 3030 | 90 | 2 | 5/8 BSW |
| 3535 | 112 | 3 | 1/2 BSW |
| 4030 4040 | 170 | 3 | 5/8 BSW |
| 4545 | 192 | 3 | 3/4 BSW |
| 5050 | 271 | 3 | 7/8 BSW |

TAPER BUSH STANDARD SHAFT SIZES

| BUSH | STANDARD BORE SIZES | |
|-------------|---------------------|--|
| 1008 | MM | 11, 12, 14, 15, 16, 18, 19, 20, 22, 24, 25 |
| | INCH | 3/8, 1/2, 5/8, 3/4, 7/8, 1 |
| 1108 | MM | 11, 12, 14, 15, 16, 18, 19, 20, 22, 24, 25, 28 |
| | INCH | 3/8, 1/2, 9/16, 5/8, 3/4, 7/8, 15/16, 1, 1.1/16, 1.1/8 |
| 1210 | MM | 12, 14, 15, 16, 18, 19, 20, 22, 24, 25, 26, 28, 30, 32 |
| | INCH | 1/2, 9/16, 5/8, 11/16, 3/4, 13/16, 7/8, 1, 1.1/16, 1.1/8, 1.3/16, 1.1/4 |
| 1215 | MM | 12, 14, 15, 16, 18, 19, 20, 22, 24, 25, 26, 28, 30, 32 |
| | INCH | 1/2, 9/16, 5/8, 11/16, 3/4, 13/16, 7/8, 1, 1.1/16, 1.1/8, 1.3/16, 1.1/4 |
| 1310 | MM | 14, 15, 16, 18, 19, 20, 22, 24, 25, 28, 30, 32 |
| | INCH | 1/2, 5/8, 3/4, 7/8, 1, 1.1/8, 1.1/4 |
| 1610 | MM | 12, 14, 15, 16, 18, 19, 20, 22, 24, 25, 28, 30, 32, 35, 38, 40, 42 |
| | INCH | 1/2, 9/16, 5/8, 3/4, 13/16, 7/8, 1, 1.1/16, 1.1/8, 1.1/4, 1.5/16, 1.3/8, 1.1/2, 1.5/8 |
| 1615 | MM | 12, 14, 15, 16, 18, 19, 20, 22, 24, 25, 28, 30, 32, 35, 38, 40, 42 |
| | INCH | 1/2, 9/16, 5/8, 11/16, 3/4, 13/16, 7/8, 15/16, 1, 1.1/16, 1.1/8, 1.3/16, 1.1/4, 1.5/16, 1.3/8, 1.1/2, 1.5/8 |
| 2012 | MM | 16, 18, 19, 20, 22, 24, 25, 28, 30, 32, 35, 38, 40, 42, 45, 48, 50 |
| | INCH | 3/4, 7/8, 1, 1.1/8, 1.1/4, 1.3/8, 1.1/2, 1.5/8, 1.3/4, 1.7/8, 2 |
| 2017 | MM | 16, 18, 19, 20, 22, 24, 25, 28, 30, 32, 35, 38, 40, 42, 45, 48, 50 |
| | INCH | 3/4, 13/16, 7/8, 15/16, 1, 1.1/16, 1.1/8, 1.1/4, 1.5/16, 1.3/8, 1.1/2, 1.5/8, 1.3/4, 1.7/8, 2 |
| 2517 | MM | 18, 19, 20, 22, 24, 25, 28, 30, 32, 35, 38, 40, 42, 45, 48, 50, 55, 60 |
| | INCH | 3/4, 7/8, 1, 1.1/8, 1.1/4, 1.3/8, 1.1/2, 1.5/8, 1.3/4, 1.7/8, 2, 2.1/8, 2.1/4, 2.3/8, 2.1/2 |
| 3020 | MM | 25, 28, 30, 32, 35, 38, 40, 42, 45, 48, 50, 55, 60, 65, 70, 75 |
| | INCH | 1, 1.1/8, 1.1/4, 1.3/8, 1.1/2, 1.3/4, 1.5/8, 1.7/8, 2, 2.1/8, 2.1/4, 2.3/8, 2.1/2, 2.5/8, 2.3/4, 2.7/8, 3 |
| 3030 | MM | 25, 28, 30, 32, 35, 38, 40, 42, 45, 48, 50, 55, 60, 65, 70, 75 |
| | INCH | 1, 1.1/8, 1.1/4, 1.3/8, 1.1/2, 1.5/8, 1.3/4, 1.7/8, 2, 2.1/8, 2.1/4, 2.3/8, 2.1/2, 2.5/8, 2.3/4, 2.7/8, 3 |
| 3535 | MM | 35, 38, 40, 42, 45, 48, 50, 55, 60, 65, 70, 75, 80, 85, 90 |
| | INCH | 1.3/8, 1.1/2, 1.5/8, 1.3/4, 1.7/8, 2, 2.1/8, 2.1/4, 2.3/8, 2.1/2, 2.5/8, 2.3/4, 2.7/8, 3, 3.1/8, 3.1/4, 3.3/8, 3.1/2 |
| 4030 | MM | 40, 42, 45, 48, 50, 55, 60, 65, 70, 75, 80, 85, 90, 95, 100 |
| | INCH | 1.3/8, 1.1/2, 1.3/4, 1.7/8, 2, 2.1/8, 2.1/4, 2.1/2, 2.5/8, 2.3/4, 2.7/8, 3, 3.1/4, 3.1/2, 3.3/4, 4 |
| 4040 | MM | 40, 42, 45, 48, 50, 55, 60, 65, 70, 75, 80, 85, 90, 95, 100 |
| | INCH | 1.3/8, 1.1/2, 1.3/4, 1.7/8, 2, 2.1/8, 2.1/4, 2.1/2, 2.5/8, 2.3/4, 2.7/8, 3, 3.1/4, 3.1/2, 3.3/4, 4 |
| 4545 | MM | 60, 65, 70, 75, 80, 85, 90, 95, 100, 105, 110 |
| | INCH | 2.1/4, 2.3/8, 2.1/2, 2.3/4, 2.7/8, 3, 3.1/8, 3.1/4, 3.3/8, 3.1/2, 3.3/4, 4, 4.1/4, 4.1/2 |
| 5050 | MM | 70, 75, 80, 85, 90, 95, 100, 110, 115, 120, 125 |
| | INCH | 2.3/4, 2.7/8, 3, 3.1/4, 3.1/2, 3.3/4, 4, 4.1/4, 4.1/2, 4.3/4, 5 |

PART NUMBER EXAMPLE

